

1

# Modeling Chronic Toxicity: A comparison of experimental variability with (Q)SAR/read-across predictions

2  
Christoph Helma<sup>1</sup> David Vorgrimm<sup>1</sup> Denis Gebele<sup>1</sup> Martin Gütlein<sup>2</sup> Barbara  
Engeli<sup>3</sup> Jürg Zarn<sup>3</sup> Benoit Schilter<sup>4</sup> Elena Lo Piparo<sup>4</sup>

E-mail:

3  
**Abstract**

4 This study compares the accuracy of (Q)SAR/read-across predictions with the  
5 experimental variability of chronic LOAEL values from *in vivo* experiments. We  
6 could demonstrate that predictions of the **lazar** algorithm within the applicability  
7 domain of the training data have the same variability as the experimental training  
8 data. Predictions with a lower similarity threshold (i.e. a larger distance from the  
9 applicability domain) are also significantly better than random guessing, but the  
10 errors to be expected are higher and a manual inspection of prediction results is  
11 highly recommended.

12 <sup>1</sup> in silico toxicology gmbh, Basel, Switzerland

13 <sup>2</sup> Inst. f. Computer Science, Johannes Gutenberg Universität Mainz, Germany

14 <sup>3</sup> Federal Food Safety and Veterinary Office (FSVO) , Risk Assessment Division , Bern ,  
15 Switzerland

<sup>4</sup> Chemical Food Safety Group, Nestlé Research Center, Lausanne, Switzerland

## Introduction

Relying on standard animal toxicological testing for chemical hazard identification and characterization is increasingly questioned on both scientific and ethical grounds. In addition, it appears obvious that from a resource perspective, the capacity of standard toxicology to address the safety of thousands of untested chemicals (Fowler, Savage, and Mendez 2011) to which human may be exposed is very limited. It has also been recognized that getting rapid insight on toxicity of chemicals in case of emergency safety incidents or for early prioritization in research and development (safety by design) is a big challenge mainly because of the time and cost constraints associated with the generation of relevant animal data. In this context, alternative approaches to obtain timely and fit-for-purpose toxicological information are being developed. Amongst others *in silico* toxicology methods are considered highly promising. Importantly, they are raising more and more interests and getting increased acceptance in various regulatory (e.g. (ECHA 2008, EFSA (2016), EFSA (2014), Health Canada (2016), OECD (2015))) and industrial (e.g. (Stanton and Krusezewski 2016, Lo Piparo et al. (2011))) frameworks.

For a long time already, computational methods have been an integral part of pharmaceutical discovery pipelines, while in chemical food safety their actual potentials emerged only recently (Lo Piparo et al. 2011). In this field, an application considered critical is in the establishment of levels of safety concern in order to rapidly and efficiently manage toxicologically uncharacterized chemicals identified in food. This requires a risk-based approach to benchmark exposure with a quantitative value of toxicity relevant for risk assessment (Schilter et al. 2014). Since chronic studies have the highest power (more animals

per group and more endpoints than other studies) and because long-term toxicity studies are often the most sensitive in food toxicology databases, predicting chronic toxicity is of prime importance. Up to now, read-across and Quantitative Structure Activity Relationships (QSAR) have been the most used *in silico* approaches to obtain quantitative predictions of chronic toxicity.

The quality and reproducibility of (Q)SAR and read-across predictions has been a continuous and controversial topic in the toxicological risk-assessment community. Although model predictions can be validated with various procedures, to review results in context of experimental variability has actually been rarely done or attempted. With missing information about the variability of experimental toxicity data it is hard to judge the performance of predictive models objectively and it is tempting for model developers to use aggressive model optimisation methods that lead to impressive validation results, but also to overfitted models with little practical relevance.

In the present study, automatic read-across like models were built to generate quantitative predictions of long-term toxicity. Two databases compiling chronic oral rat Lowest Adverse Effect Levels (LOAEL) as endpoint were used. An early review of the databases revealed that many chemicals had at least two independent studies/LOAELs. These studies were exploited to generate information on the reproducibility of chronic animal studies and were used to evaluate prediction performance of the models in the context of experimental variability.

An important limitation often raised for computational toxicology is the lack of transparency on published models and consequently on the difficulty for the scientific community to reproduce and apply them. To overcome these issues, source code for all programs and libraries and the data that have been used to generate this manuscript are made available under GPL3 licenses. Data and compiled programs with all dependencies for the reproduc-

tion of results in this manuscript are available as a self-contained docker image. All data, tables and figures in this manuscript was generated directly from experimental results using the R package `knitr`.

## Materials and Methods

The following sections give a high level overview about algorithms and datasets used for this study. In order to provide unambiguous references to algorithms and datasets, links to source code and data sources are included in the text.

### Datasets

#### Nestlé database

The first database (Nestlé database for further reference) originates from the publication of (P. Mazzatorta et al. 2008). It contains chronic ( $> 180$  days) lowest observed effect levels (LOAEL) for rats (*Rattus norvegicus*) after oral (gavage, diet, drinking water) administration. The Nestlé database consists of 567 LOAEL values for 445 unique chemical structures. The Nestlé database can be obtained from the following GitHub links:

- original data: [https://github.com/opentox/loael-paper/blob/submission/data/LOAEL\\_mg\\_corrected\\_smiles\\_mmol.csv](https://github.com/opentox/loael-paper/blob/submission/data/LOAEL_mg_corrected_smiles_mmol.csv)
- unique smiles: <https://github.com/opentox/loael-paper/blob/submission/data/mazzatorta.csv>
- $-\log_{10}$  transformed LOAEL: [https://github.com/opentox/loael-paper/blob/submission/data/mazzatorta\\_log10.csv](https://github.com/opentox/loael-paper/blob/submission/data/mazzatorta_log10.csv).

## Swiss Food Safety and Veterinary Office (FSVO) database

Publicly available data from pesticide evaluations of chronic rat toxicity studies from the European Food Safety Authority (EFSA) (EFSA 2014), the Joint FAO/WHO Meeting on Pesticide Residues (JMPR) (WHO 2011) and the US EPA (US EPA 2011) were compiled to form the FSVO-database. Only studies providing both an experimental NOAEL and an experimental LOAEL were included. The LOAELs were taken as they were reported in the evaluations. Further details on the database are described elsewhere (Zarn, Engeli, and Schlatter 2011, Zarn, Engeli, and Schlatter (2013)). The FSVO-database consists of 493 rat LOAEL values for 381 unique chemical structures. It can be obtained from the following GitHub links:

- original data: [https://github.com/opentox/loael-paper/blob/submission/data/NOAEL-LOAEL\\_SMILES\\_rat\\_chron.csv](https://github.com/opentox/loael-paper/blob/submission/data/NOAEL-LOAEL_SMILES_rat_chron.csv)
- unique smiles and mmol/kg bw/day units: <https://github.com/opentox/loael-paper/blob/submission/data/swiss.csv>
- -log10 transformed LOAEL: [https://github.com/opentox/loael-paper/blob/submission/data/swiss\\_log10.csv](https://github.com/opentox/loael-paper/blob/submission/data/swiss_log10.csv)

## Preprocessing

Chemical structures (represented as SMILES (Weininger 1988)) in both databases were checked for correctness. When syntactically incorrect or missing SMILES were generated from other identifiers (e.g names, CAS numbers). Unique smiles from the OpenBabel library (OBoyle et al. 2011) were used for the identification of duplicated structures.

Studies with undefined or empty LOAEL entries were removed from the databases. LOAEL values were converted to mmol/kg bw/day units and rounded to five significant digits. For

prediction, validation and visualisation purposes -log10 transformations are used.

## Derived datasets

Two derived datasets were obtained from the original databases:

The *test dataset* contains data from compounds that occur in both databases. LOAEL values equal at five significant digits were considered as duplicates originating from the same study/publication and only one instance was kept in the test dataset. The test dataset has 375 LOAEL values for 155 unique chemical structures and was used for

- evaluating experimental variability
- comparing model predictions with experimental variability.

The *training dataset* is the union of the Nestlé and the FSVO databases and it was used to build predictive models. LOAEL duplicates were removed using the same criteria as for the test dataset. The training dataset has 998 LOAEL values for 671 unique chemical structures.

## Algorithms

In this study we are using the modular *lazar* (*lazy structure activity relationships*) framework (A. Maunz et al. 2013) for model development and validation. The complete **lazar** source code can be found on [GitHub](#).

*lazar* follows the following basic *workflow*:

For a given chemical structure *lazar*

- searches in a database for similar structures (*neighbors*) with experimental data,
- builds a local QSAR model with these neighbors and

- uses this model to predict the unknown activity of the query compound.

This procedure resembles an automated version of *read across* predictions in toxicology, in machine learning terms it would be classified as a *k-nearest-neighbor* algorithm.

Apart from this basic workflow *lazar* is completely modular and allows the researcher to use any algorithm for similarity searches and local QSAR modelling. Algorithms used within this study are described in the following sections.

## Neighbor identification

Similarity calculations are based on [MolPrint2D fingerprints](#) (Bender et al. 2004) from the OpenBabel chemoinformatics library (OBoyle et al. 2011).

The MolPrint2D fingerprint uses atom environments as molecular representation, which resemble basically the chemical concept of functional groups. For each atom in a molecule it represents the chemical environment using the atom types of connected atoms.

MolPrint2D fingerprints are generated dynamically from chemical structures and do not rely on predefined lists of fragments (such as OpenBabel FP3, FP4 or MACCs fingerprints or lists of toxocophores/toxicophobes). This has the advantage that they may capture substructures of toxicological relevance that are not included in other fingerprints. Unpublished experiments have shown that predictions with MolPrint2D fingerprints are indeed more accurate than other OpenBabel fingerprints.

From MolPrint2D fingerprints we can construct a feature vector with all atom environments of a compound, which can be used to calculate chemical similarities.

The [chemical similarity](#) between two compounds A and B is expressed as the proportion between atom environments common in both structures  $A \cap B$  and the total number of

150 atom environments  $A \cup B$  (Jaccard/Tanimoto index, Equation 1).

$$sim = \frac{|A \cap B|}{|A \cup B|} \quad (1)$$

151 The threshold selection is a trade-off between prediction accuracy (high threshold) and  
152 the number of predictable compounds (low threshold). As it is in many practical cases  
153 desirable to make predictions even in the absence of closely related neighbors, we follow a  
154 tiered approach:

- 155 • First a similarity threshold of 0.5 is used to collect neighbors, to create a local QSAR  
156 model and to make a prediction for the query compound.
- 157 • If any of these steps fails, the procedure is repeated with a similarity threshold of 0.2  
158 and the prediction is flagged with a warning that it might be out of the applicability  
159 domain of the training data.

160 Compounds with the same structure as the query structure are automatically **eliminated**  
161 **from neighbors** to obtain unbiased predictions in the presence of duplicates.

## 162 Local QSAR models and predictions

163 Only similar compounds (*neighbors*) above the threshold are used for local QSAR models.  
164 In this investigation we are using **weighted random forests regression (RF)** for the prediction  
165 of quantitative properties. First all uninformative fingerprints (i.e. features with identical  
166 values across all neighbors) are removed. The remaining set of features is used as descriptors  
167 for creating a local weighted RF model with atom environments as descriptors and model  
168 similarities as weights. The RF method from the **caret** R package (Kuhn 2008) is used for  
169 this purpose. Models are trained with the default **caret** settings, optimizing the number of  
170 RF components by bootstrap resampling.



171 Finally the local RF model is applied to **predict the activity** of the query compound. The  
172 RMSE of bootstrapped local model predictions is used to construct 95% prediction intervals  
173 at  $1.96 \times \text{RMSE}$ . The width of the prediction interval indicates the expected prediction  
174 accuracy. The “true” value of a prediction should be with 95% probability within the  
175 prediction interval.

176 If RF modelling or prediction fails, the program resorts to using the **weighted mean** of  
177 the neighbors LOAEL values, where the contribution of each neighbor is weighted by its  
178 similarity to the query compound. In this case the prediction is also flagged with a warning.

## 179 **Applicability domain**

180 The applicability domain (AD) of lazar models is determined by the structural diversity of  
181 the training data. If no similar compounds are found in the training data no predictions will  
182 be generated. Warnings are issued if the similarity threshold has to be lowered from 0.5 to  
183 0.2 in order to enable predictions and if lazar has to resort to weighted average predictions,  
184 because local random forests fail. Thus predictions without warnings can be considered as  
185 close to the applicability domain and predictions with warnings as more distant from the  
186 applicability domain. Quantitative applicability domain information can be obtained from  
187 the similarities of individual neighbors.

188 Local regression models consider neighbor similarities to the query compound, by weighting  
189 the contribution of each neighbor is by similarity. The variability of local model predictions  
190 is reflected in the 95% prediction interval associated with each prediction.

## Validation

For the comparison of experimental variability with predictive accuracies we are using a test set of compounds that occur in both databases. Unbiased read across predictions are obtained from the *training* dataset, by removing *all* information from the test compound from the training set prior to predictions. This procedure is hardcoded into the prediction algorithm in order to prevent validation errors. As we have only a single test set no model or parameter optimisations were performed in order to avoid overfitting a single dataset.

Results from 3 repeated 10-fold crossvalidations with independent training/test set splits are provided as additional information to the test set results.

The final model for production purposes was trained with all available LOAEL data (Nestlé and FSVO databases combined).

## Availability

**Public webinterface** <https://lazar.in-silico.ch> (see Figure 1)

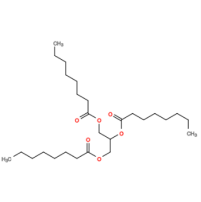
**lazar framework** <https://github.com/opentox/lazar> (source code)

**lazar GUI** <https://github.com/opentox/lazar-gui> (source code)

**Manuscript** <https://github.com/opentox/loael-paper> (source code for the manuscript and validation experiments)

**Docker image** <https://hub.docker.com/r/insilicotox/loael-paper/> (container with manuscript, validation experiments, **lazar** libraries and third party dependencies)

## Prediction Results:

Compound	Lowest observed adverse effect level (LOAEL) (Rodents)
 <chem>CCCCCCCC(=O)OC(COC(=O)CCCCCCC)COC(=O)CCCCCCC</chem>	<b>Prediction:</b> 9.29 (mmol/kg_bw/day) 4370.0 (mg/kg_bw/day)  <b>95% Prediction interval:</b> 1.43 - 60.4 (mmol/kg_bw/day) 671.0 - 28400.0 (mg/kg_bw/day)

## Neighbors:

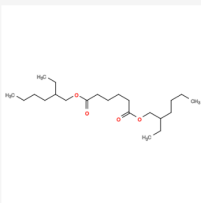
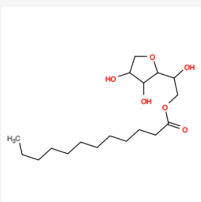
Lowest observed adverse effect level (LOAEL) (Rodents)		
Compound	Measured Activity <a href="#">i</a>	Similarity <a href="#">i</a>
 <chem>CCCCC(COC(=O)CCCCC(=O)OCC(CCCC)CC)OC</chem>	4.05 (mmol/kg_bw/day) 1500.0 (mg/kg_bw/day)	0.571
 <chem>CCCCCCCCCCCCC(=O)OCC(C1OCC(C1O)O)O</chem>	19.9 (mmol/kg_bw/day) 6880.0 (mg/kg_bw/day)	0.529

Figure 1: Screenshot of a lazar prediction from the public webinterface.

## Results

### Dataset comparison

The main objective of this section is to compare the content of both databases in terms of structural composition and LOAEL values, to estimate the experimental variability of LOAEL values and to establish a baseline for evaluating prediction performance.

### Structural diversity

In order to compare the structural diversity of both databases we evaluated the frequency of functional groups from the OpenBabel FP4 fingerprint. Figure 2 shows the frequency of functional groups in both databases. 139 functional groups with a frequency  $> 25$  are depicted, the complete table for all functional groups can be found in the supplemental material at [GitHub](#).

This result was confirmed with a visual inspection using the [CheS-Mapper](#) (Chemical Space Mapping and Visualization in 3D, Gütlein, Karwath, and Kramer (2012)) tool. CheS-Mapper can be used to analyze the relationship between the structure of chemical compounds, their physico-chemical properties, and biological or toxic effects. It depicts closely related (similar) compounds in 3D space and can be used with different kinds of features. We have investigated structural as well as physico-chemical properties and concluded that both databases are very similar, both in terms of chemical structures and physico-chemical properties.

The only statistically significant difference between both databases is that the Nestlé database contains more small compounds (61 structures with less than 11 non-hydrogen atoms) than the FSVO-database (19 small structures, chi-square test: p-value  $3.7\text{E-}7$ ).

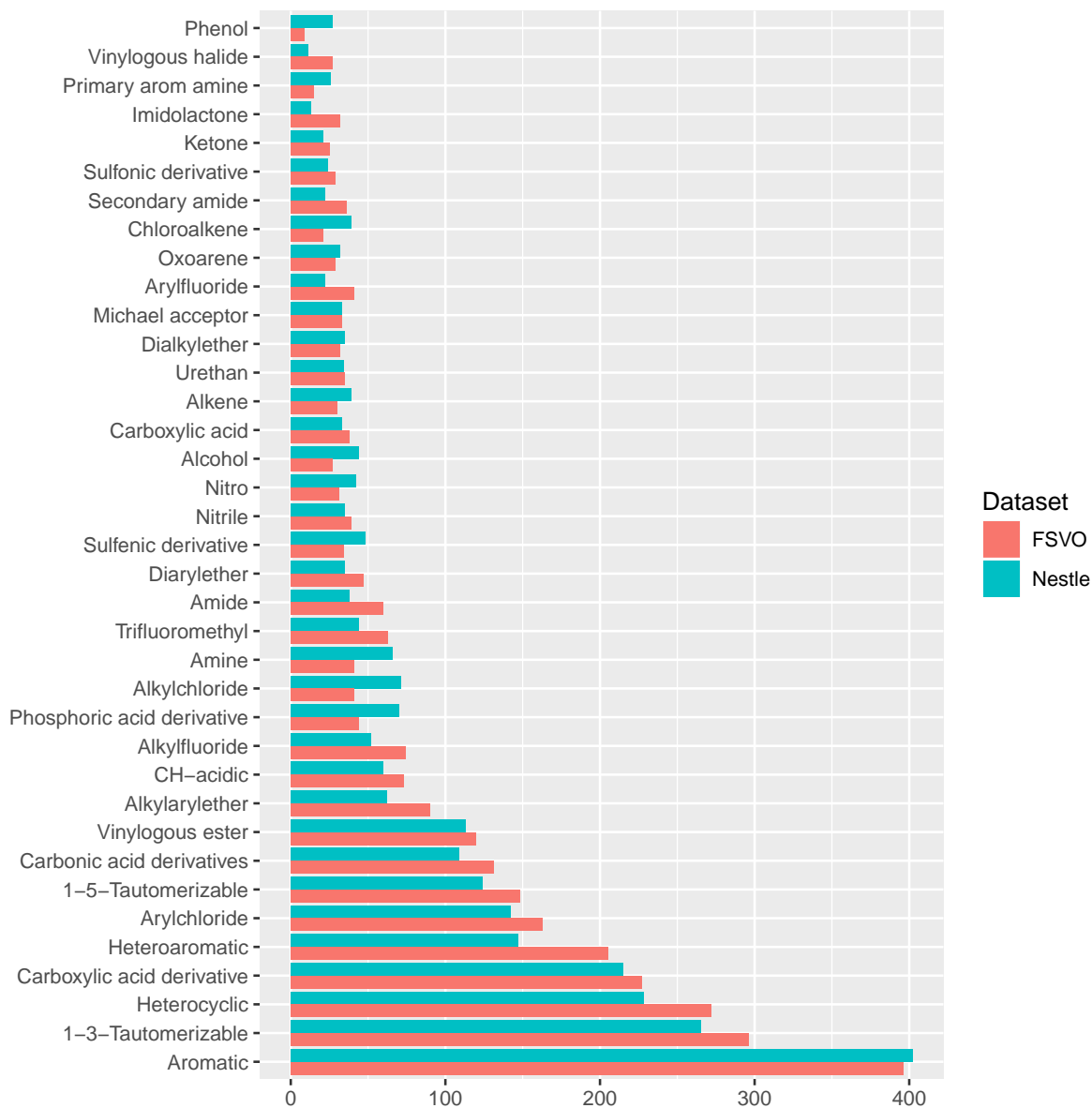


Figure 2: Frequency of functional groups.

## Experimental variability versus prediction uncertainty

Duplicated LOAEL values can be found in both databases and there is a substantial number of 155 compounds with more than one LOAEL. These chemicals allow us to estimate the variability of experimental results within individual databases and between databases. Data with *identical* values (at five significant digits) in both databases were excluded from variability analysis, because it is likely that they originate from the same experiments.

### Intra database variability

Both databases contain substances with multiple measurements, which allow the determination of experimental variabilities. For this purpose we have calculated the mean LOAEL standard deviation of compounds with multiple measurements. Mean standard deviations and thus experimental variabilities are similar for both databases.

The Nestlé database has 567 LOAEL values for 445 unique structures, 93 compounds have multiple measurements with a mean standard deviation (-log10 transformed values) of 0.32 (0.56 mg/kg\_bw/day, 0.56 mmol/kg\_bw/day) (P. Mazzatorta et al. (2008), Figure 3).

The FSVO database has 493 rat LOAEL values for 381 unique structures, 91 compounds have multiple measurements with a mean standard deviation (-log10 transformed values) of 0.29 (0.57 mg/kg\_bw/day, 0.59 mmol/kg\_bw/day) (Figure 3).

Standard deviations of both databases do not show a statistically significant difference with a p-value (t-test) of 0.21. The combined test set has a mean standard deviation (-log10 transformed values) of 0.33 (0.56 mg/kg\_bw/day, 0.55 mmol/kg\_bw/day) (Figure 3).

### Inter database variability

In order to compare the correlation of LOAEL values in both databases and to establish

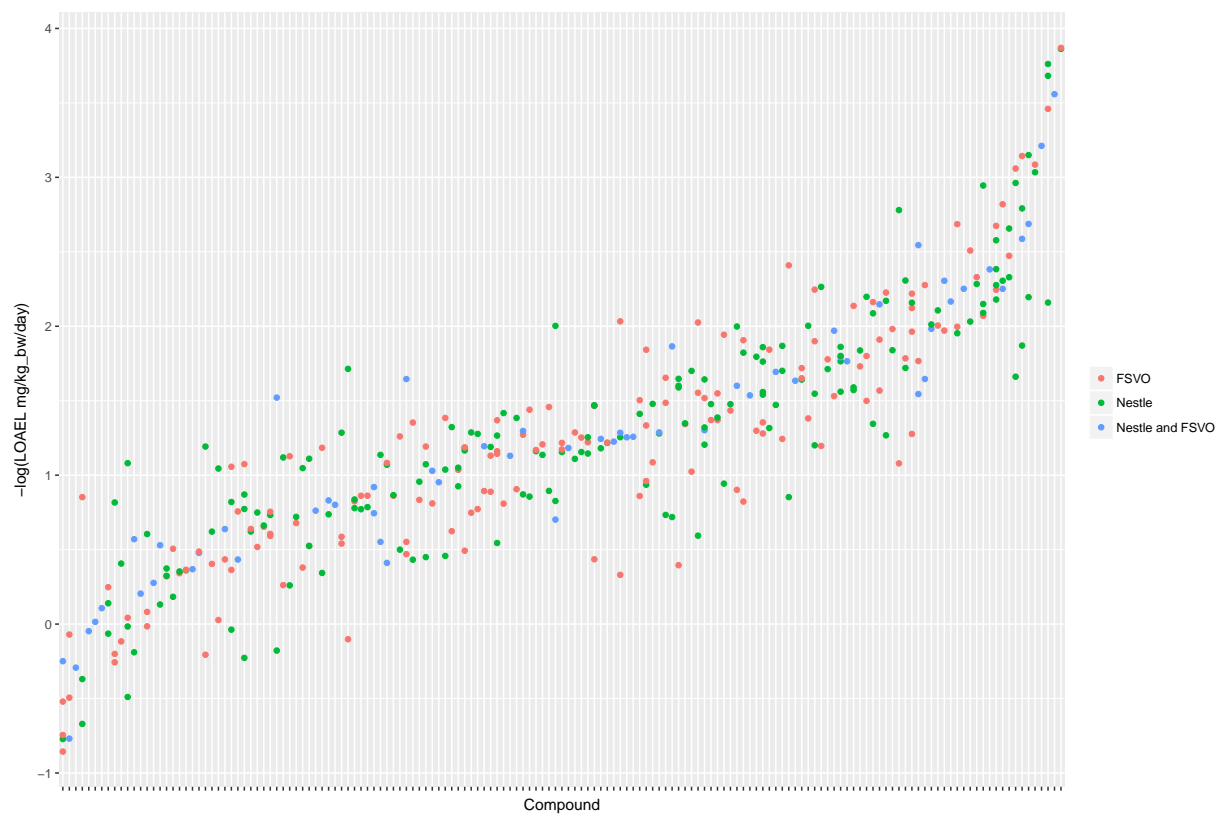


Figure 3: LOAEL distribution and variability of compounds with multiple measurements in both databases. Compounds were sorted according to LOAEL values. Each vertical line represents a compound, and each dot an individual LOAEL value. Experimental variability can be inferred from dots (LOAELs) on the same line (compound).

a reference for predicted values, we have investigated compounds, that occur in both databases.

Figure 4 depicts the correlation between LOAEL values from both databases. As both databases contain duplicates medians were used for the correlation plot and statistics. It should be kept in mind that the aggregation of duplicated measurements into a single median value hides a substantial portion of the experimental variability. Correlation analysis shows a significant (p-value < 2.2e-16) correlation between the experimental data in both databases with  $r^2$ : 0.52, RMSE: 0.59

Figure 5 shows the experimental LOAEL variability of compounds occurring in both datasets (i.e. the *test* dataset) colored in blue (experimental). This is the baseline reference for the comparison with predicted values.

## Local QSAR models

In order to compare the performance of *in silico* read across models with experimental variability we used compounds with multiple measurements as a test set (375 measurements, 155 compounds). *lazar* read across predictions were obtained for 155 compounds, 37 predictions failed, because no similar compounds were found in the training data (i.e. they were not covered by the applicability domain of the training data).

In 100% of the test examples experimental LOAEL values were located within the 95% prediction intervals.

Figure 5 shows a comparison of predicted with experimental values. Most predicted values were located within the experimental variability.

Correlation analysis was performed between individual predictions and the median of experimental data. All correlations are statistically highly significant with a p-value <



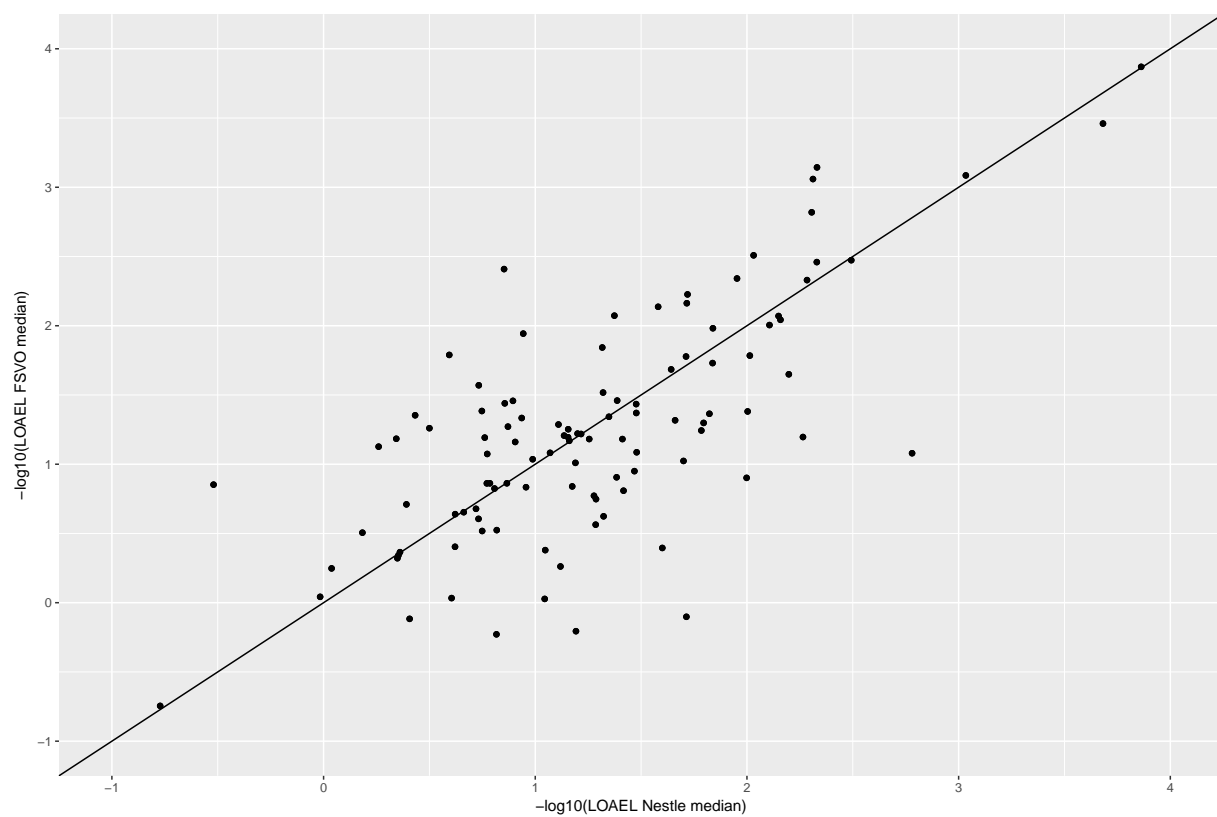


Figure 4: Correlation of median LOAEL values from Nestlé and FSVO databases. Data with identical values in both databases was removed from analysis.

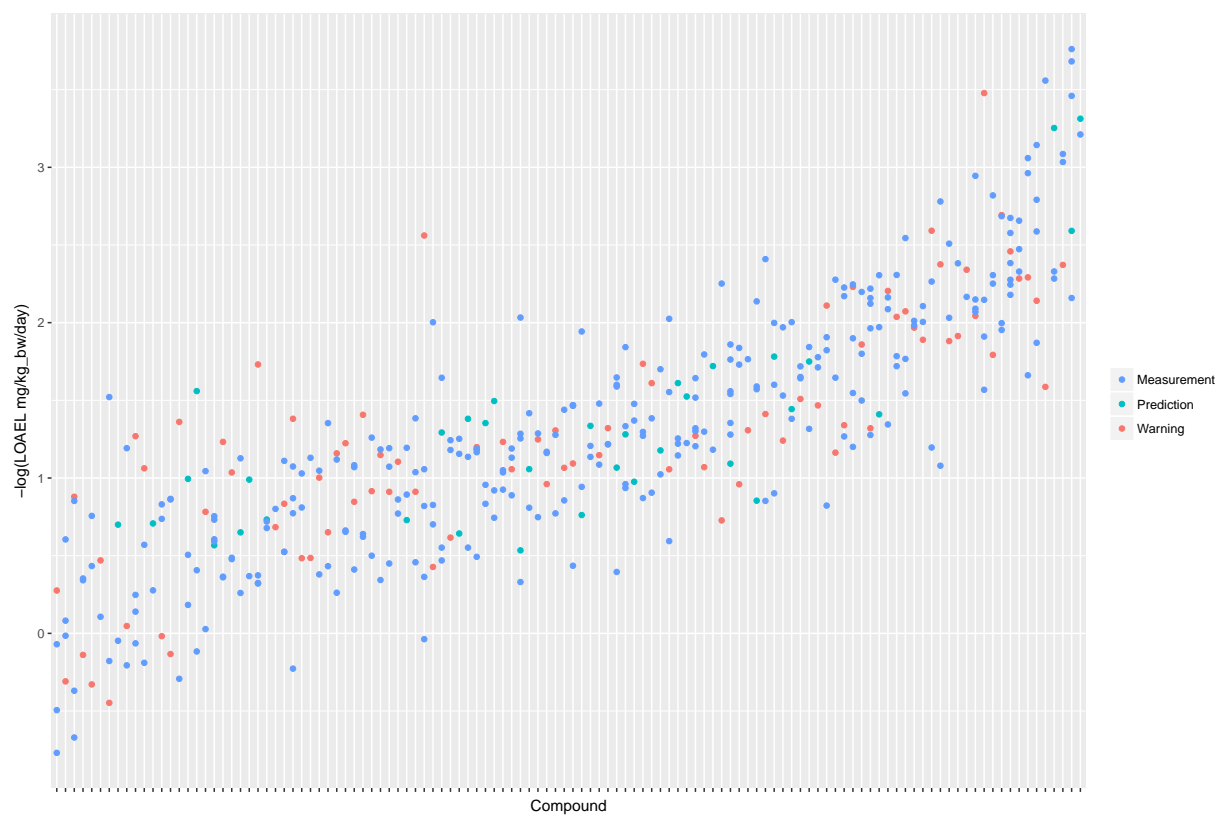


Figure 5: Comparison of experimental with predicted LOAEL values. Each vertical line represents a compound, dots are individual measurements (blue), predictions (green) or predictions far from the applicability domain, i.e. with warnings (red).

277 2.2e-16. These results are presented in Figure 6 and Table 2. Please bear in mind that  
 278 the aggregation of multiple measurements into a single median value hides experimental  
 279 variability.

Table 1: Comparison of model predictions with experimental variability.

Comparison	$r^2$	RMSE	Nr. predicted
Nestlé vs. FSVO database	0.52	0.59	
AD close predictions vs. test median	0.48	0.56	34/155
AD distant predictions vs. test median	0.38	0.68	84/155
All predictions vs. test median	0.4	0.65	118/155

280 For a further assessment of model performance three independent 10-fold cross-validations  
 281 were performed. Results are summarised in Table 2 and Figure 7. All correlations of  
 282 predicted with experimental values are statistically highly significant with a p-value <  
 283 2.2e-16. This is observed for compounds close and more distant to the applicability domain.

Table 2: Results from 3 independent 10-fold crossvalidations

Predictions	$r^2$	RMSE	Nr. predicted
AD close	0.61	0.58	102/671
AD distant	0.45	0.78	374/671
All	0.47	0.74	476/671
AD close	0.59	0.6	101/671
AD distant	0.45	0.77	376/671
All	0.47	0.74	477/671

Predictions	$r^2$	RMSE	Nr. predicted
AD close	0.59	0.57	93/671
AD distant	0.43	0.81	384/671
All	0.45	0.77	477/671

## Discussion

It is currently acknowledged that there is a strong need for toxicological information on the multiple thousands of chemicals to which human may be exposed through food. These include for example many chemicals in commerce, which could potentially find their way into food (Stanton and Krusezewski 2016, Fowler, Savage, and Mendez (2011)), but also substances migrating from food contact materials (Grob et al. 2006), chemicals generated over food processing (Cotterill et al. 2008), environmental contaminants as well as inherent plant toxicants (Schilter, Constable, and Perrin 2013). For the vast majority of these chemicals, no toxicological data is available and consequently insight on their potential health risks is very difficult to obtain. It is recognized that testing all of them in standard animal studies is neither feasible from a resource perspective nor desirable because of ethical issues associated with animal experimentation. In addition, for many of these chemicals, risk may be very low and therefore testing may actually be irrelevant. In this context, the identification of chemicals of most concern on which limited resource available should focused is essential and computational toxicology is thought to play an important role for that.

In order to establish the level of safety concern of food chemicals toxicologically not characterized, a methodology mimicking the process of chemical risk assessment, and

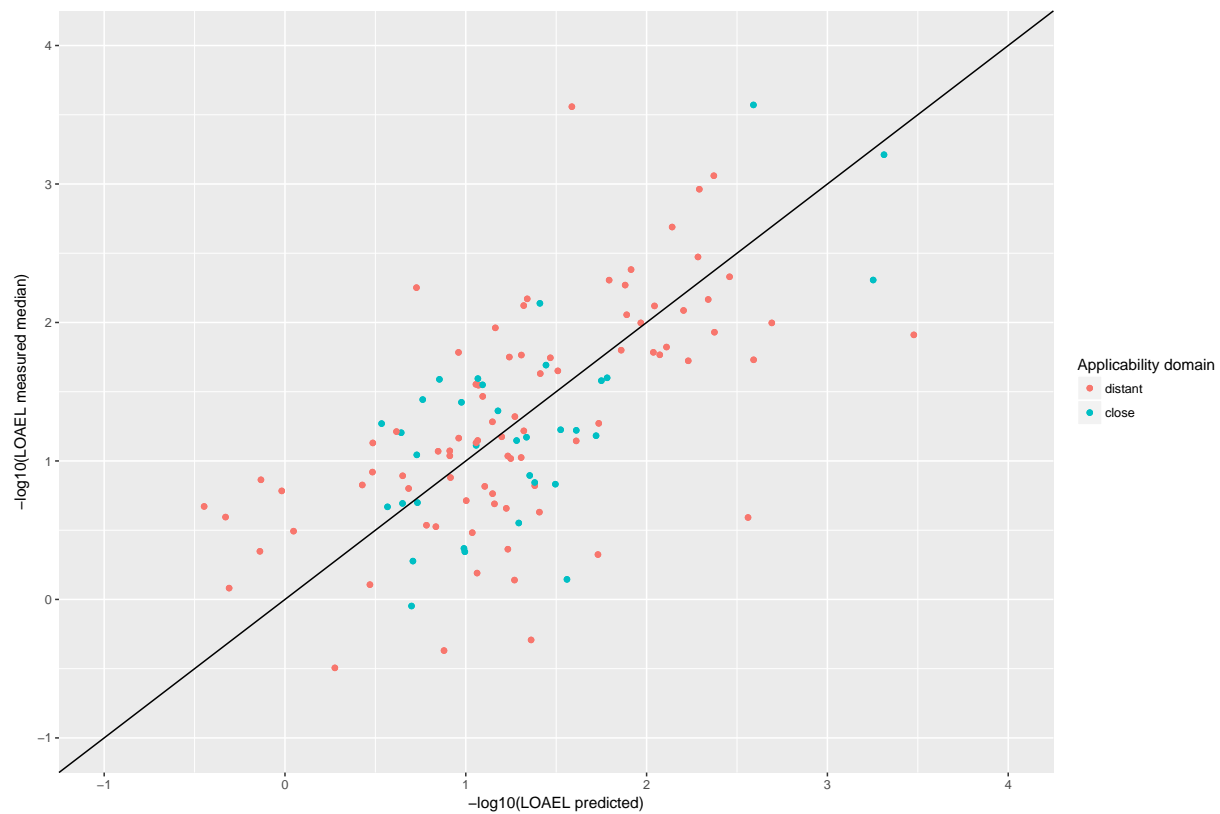
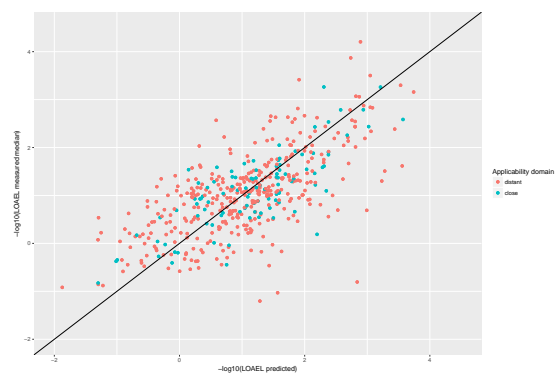
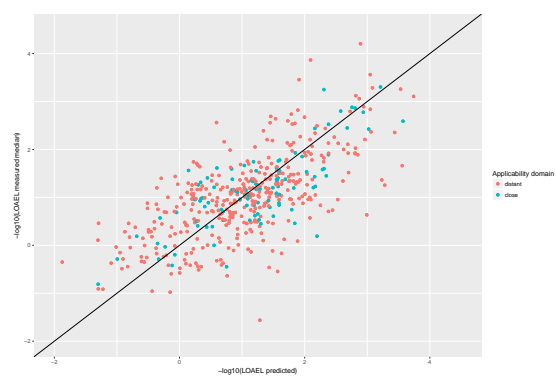


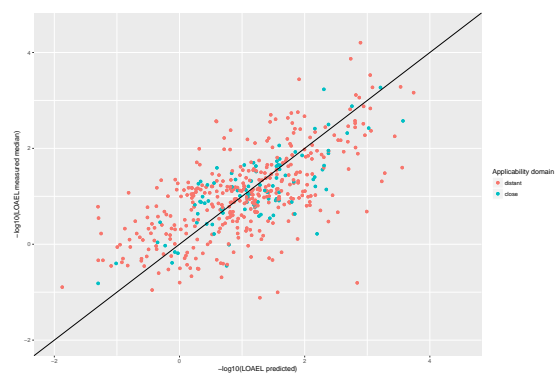
Figure 6: Correlation of experimental with predicted LOAEL values (test set). Green dots indicate predictions close to the applicability domain (i.e. without warnings), red dots indicate predictions far from the applicability domain (i.e. with warnings).



(a)



(b)



(c)

Figure 7: Correlation of predicted vs. measured values for three independent crossvalidations with MP2D fingerprint descriptors and local random forest models.

supported by computational toxicology, was proposed (Schilter et al. 2014). It is based on the calculation of margins of exposure (MoE) between predicted values of toxicity and exposure estimates. The level of safety concern of a chemical is then determined by the size of the MoE and its suitability to cover the uncertainties of the assessment. To be applicable, such an approach requires quantitative predictions of toxicological endpoints relevant for risk assessment. The present work focuses on the prediction of chronic toxicity, a major and often pivotal endpoint of toxicological databases used for hazard identification and characterization of food chemicals.

In a previous study, automated read-across like models for predicting carcinogenic potency were developed. In these models, substances in the training dataset similar to the query compounds are automatically identified and used to derive a quantitative TD50 value. The errors observed in these models were within the published estimation of experimental variability (Lo Piparo et al. 2014). In the present study, a similar approach was applied to build models generating quantitative predictions of long-term toxicity. Two databases compiling chronic oral rat lowest adverse effect levels (LOAEL) as reference value were available from different sources. Our investigations clearly indicated that the Nestlé and FSVO databases are very similar in terms of chemical structures and properties as well as distribution of experimental LOAEL values. The only significant difference that we observed was that the Nestlé one has larger amount of small molecules, than the FSVO database. For this reason we pooled both databases into a single training dataset for read across predictions.

An early review of the databases revealed that 155 out of the 671 chemicals available in the training datasets had at least two independent studies/LOAELs. These studies were exploited to generate information on the reproducibility of chronic animal studies and were used to evaluate prediction performance of the models in the context of experimental

variability. Considerable variability in the experimental data was observed. Study design differences, including dose selection, dose spacing and route of administration are likely explanation of experimental variability. High experimental variability has an impact on model building and on model validation. First it influences model quality by introducing noise into the training data, secondly it influences accuracy estimates because predictions have to be compared against noisy data where "true" experimental values are unknown. This will become obvious in the next section, where comparison of predictions with experimental data is discussed. The data obtained in the present study indicate that **lazar** generates reliable predictions for compounds within the applicability domain of the training data (i.e. predictions without warnings, which indicates a sufficient number of neighbors with similarity  $> 0.5$  to create local random forest models). Correlation analysis shows that errors (RMSE) and explained variance ( $r^2$ ) are comparable to experimental variability of the training data.

Predictions with a warning (neighbor similarity  $< 0.5$  and  $> 0.2$  or weighted average predictions) are more uncertain. However, they still show a strong correlation with experimental data, but the errors are  $\sim 20\text{-}40\%$  larger than for compounds within the applicability domain (Figure 6 and Table 2). Expected errors are displayed as 95% prediction intervals, which covers 100% of the experimental data. The main advantage of lowering the similarity threshold is that it allows to predict a much larger number of substances than with more rigorous applicability domain criteria. As each of this prediction could be problematic, they are flagged with a warning to alert risk assessors that further inspection is required. This can be done in the graphical interface (<https://lazar.in-silico.ch>) which provides intuitive means of inspecting the rationales and data used for read across predictions.

Finally there is a substantial number of chemicals (37), where no predictions can be made, because no similar compounds in the training data are available. These compounds clearly



fall beyond the applicability domain of the training dataset and in such cases predictions should not be used. In order to expand the domain of applicability, the possibility to design models based on shorter, less than chronic studies should be studied. It is likely that more substances reflecting a wider chemical domain may be available. To predict such shorter duration endpoints would also be valuable for chronic toxicity since evidence suggest that exposure duration has little impact on the levels of NOAELs/LOAELs (Zarn, Engeli, and Schlatter 2011, Zarn, Engeli, and Schlatter (2013)).

### **lazar predictions**

Table 1, Table 2, Figure 5, Figure 6 and Figure 7 clearly indicate that **lazar** generates reliable predictions for compounds within the applicability domain of the training data (i.e. predictions without warnings, which indicates a sufficient number of neighbors with similarity  $> 0.5$  to create local random forest models). Correlation analysis (Table 1, Table 2) shows, that errors ( $RMSE$ ) and explained variance ( $r^2$ ) are comparable to experimental variability of the training data.

Predictions with a warning (neighbor similarity  $< 0.5$  and  $> 0.2$  or weighted average predictions) are a grey zone. They still show a strong correlation with experimental data, but the errors are larger than for compounds within the applicability domain (Table 1, Table 2). Expected errors are displayed as 95% prediction intervals, which covers 100% of the experimental data. The main advantage of lowering the similarity threshold is that it allows to predict a much larger number of substances than with more rigorous applicability domain criteria. As each of this prediction could be problematic, they are flagged with a warning to alert risk assessors that further inspection is required. This can be done in the graphical interface (<https://lazar.in-silico.ch>) which provides intuitive means of inspecting the rationales and data used for read across predictions.

Finally there is a substantial number of compounds (37), where no predictions can be made, because there are no similar compounds in the training data. These compounds clearly fall beyond the applicability domain of the training dataset and in such cases it is preferable to avoid predictions instead of random guessing.

## Summary

In conclusion, we could demonstrate that **lazar** predictions within the applicability domain of the training data have the same variability as the experimental training data. In such cases experimental investigations can be substituted with *in silico* predictions. Predictions with a lower similarity threshold can still give usable results, but the errors to be expected are higher and a manual inspection of prediction results is highly recommended.

## References

- Bender, Andreas, Hamse Y. Mussa, Robert C. Glen, and Stephan Reiling. 2004. "Molecular Similarity Searching Using Atom Environments, Information-Based Feature Selection, and a Naïve Bayesian Classifier." *Journal of Chemical Information and Computer Sciences* 44 (1): 170–78. doi:[10.1021/ci034207y](https://doi.org/10.1021/ci034207y).
- Cotterill, J.V., M.Q. Chaudry, W. Matthews, and R. W. Watkins. 2008. "In Silico Assessment of Toxicity of Heat-Generated Food Contaminants." *Food Chemical Toxicology*, no. 46(6): 1905–18.
- ECHA. 2008. "Guidance on Information Requirements and Chemical Safety Assessment,

Chapter R.6: QSARs and Grouping of Chemicals.” ECHA.

EFSA. 2014. “Rapporteur Member State Assessment Reports Submitted for the EU Peer Review of Active Substances Used in Plant Protection Products.” <http://dar.efsa.europa.eu/dar-web/provision>.

EFSA. 2016. “Guidance on the Establishment of the Residue Definition for Dietary Assessment: EFSA Panel on Plant Protection Products and Their Residues (PPR).” *EFSA Journal*, no. 14: 1–12.

Fowler, B., S. Savage, and B. Mendez. 2011. “White Paper: Protecting Public Health in the 21st Century: The Case for Computational Toxicology.” ICF International, Inc.[icfi.com](http://icfi.com).

Grob, K., M. Biedermann, E. Scherbaum, M. Roth, and K. Rieger. 2006. “Food Contamination with Organic Materials in Perspective: Packaging Materials as the Largest and Least Controlled Source? A View Focusing on the European Situation.” *Crit. Rev. Food. Sci. Nutr.*, no. 46: 529–35. doi:[10.1080/10408390500295490](https://doi.org/10.1080/10408390500295490).

Gütlein, Martin, Andreas Karwath, and Stefan Kramer. 2012. “CheS-Mapper - Chemical Space Mapping and Visualization in 3D.” *Journal of Cheminformatics* 4 (1): 7. doi:[10.1186/1758-2946-4-7](https://doi.org/10.1186/1758-2946-4-7).

Health Canada. 2016. <https://www.canada.ca/en/health-canada/services/chemical-substances/chemicals-management-plan.html>.

Kuhn, Max. 2008. “Building Predictive Models in R Using the Caret Package.” *J. of Stat. Soft.*

Lo Piparo, E., A. Maunz, C. Helma, D. Vorgrimmier, and B. Schilter. 2014. “Automated and Reproducible Read-Across Like Models for Predicting Carcinogenic Potency.” *Regulatory*

417 *Toxicology and Pharmacology*, no. 70: 370–78.

418 Lo Piparo, E., A. Worth, A. Manibusan, C. Yang, B. Schilter, P. Mazzatorta, M.N. Jacobs,  
 419 H. Steinkelner, and L. Mohimont. 2011. “Use of Computational Tools in the Field of Food  
 420 Safety.” *Regulatory Toxicology and Pharmacology*, no. 60(3): 354–62.

421 Maunz, Andreas, Martin Gütlein, Micha Rautenberg, David Vorgrimmmler, Denis Gebele, and  
 422 Christoph Helma. 2013. “Lazar: A Modular Predictive Toxicology Framework.” *Frontiers*  
 423 *in Pharmacology* 4. Frontiers Media SA. doi:[10.3389/fphar.2013.00038](https://doi.org/10.3389/fphar.2013.00038).

424 Mazzatorta, Paolo, Manuel Dominguez Estevez, Myriam Coulet, and Benoit Schilter. 2008.  
 425 “Modeling Oral Rat Chronic Toxicity.” *Journal of Chemical Information and Modeling* 48  
 426 (10): 1949–54. doi:[10.1021/ci8001974](https://doi.org/10.1021/ci8001974).

427 OBoyle, Noel M, Michael Banck, Craig A James, Chris Morley, Tim Vandermeersch, and  
 428 Geoffrey R Hutchison. 2011. “Open Babel: An Open Chemical Toolbox.” *Journal of*  
 429 *Cheminformatics* 3 (1). Springer Science and Business Media: 33. doi:[10.1186/1758-2946-3-](https://doi.org/10.1186/1758-2946-3-33)  
 430 [33](https://doi.org/10.1186/1758-2946-3-33).

431 OECD. 2015. “Fundamental and Guiding Principles for (Q)SAR Analysis of Chemicals  
 432 Carcinogens with Mechanistic Considerations Monograph 229 ENV/JM/MONO(2015)46.”  
 433 In *Series on Testing and Assessment No 229*.

434 Schilter, B., R. Benigni, A. Boobis, A. Chiodini, A. Cockburn, M.T. Cronin, E. Lo Piparo,  
 435 S. Modi, Thiel A., and A. Worth. 2014. “Establishing the Level of Safety Concern for  
 436 Chemicals in Food Without the Need for Toxicity Testing.” *Regulatory Toxicology and*  
 437 *Pharmacology*, no. 68: 275–98.

438 Schilter, B., A. Constable, and I. Perrin. 2013. “Naturally Occurring Toxicants of Plant  
 439 Origin: Risk Assessment and Management Considerations.” In *Food Safety Management:*

440 *A Practical Guide for Industry*, edited by Y. Motarjemi, 45–57. Elsevier.

441 Stanton, K., and F.H. Krusezewski. 2016. “Quantifying the Benefits of Using Read-Across  
442 and in Silico Techniques to Fullfill Hazard Data Requirements for Chemical Categories.”  
443 *Regulatory Toxicology and Pharmacology*, no. 81: 250–59. doi:[10.1016/j.yrtph.2016.09.004](https://doi.org/10.1016/j.yrtph.2016.09.004).

444 US EPA. 2011. “Fact Sheets on New Active Ingredients.”

445 Weininger, David. 1988. “SMILES, a Chemical Language and Information System. 1.  
446 Introduction to Methodology and Encoding Rules.” *Journal of Chemical Information and*  
447 *Computer Sciences* 28 (1): 31–36. doi:[10.1021/ci00057a005](https://doi.org/10.1021/ci00057a005).

448 WHO. 2011. “Joint FAO/WHO Meeting on Pesticide Residues (JMPR) Publications.”  
449 <http://www.who.int/foodsafety/publications/jmpr-monographs/en/>.

450 Zarn, J.A., B.E. Engeli, and J.R. Schlatter. 2011. “Study Parameters Influencing NOAEL  
451 and LOAEL in Toxicity Feeding Studies for Pesticides: Exposure Duration Versus Dose  
452 Decrement, Dose Spacing, Group Size and Chemical Class.” *Regul. Toxicol. Pharmacol.*,  
453 no. 61: 243–50.

454 ———. 2013. “Characterization of the Dose Decrement in Regulatory Rat Pesticide Toxicity  
455 Feeding Studies.” *Regul. Toxicol. Pharmacol.*, no. 67: 215–20.